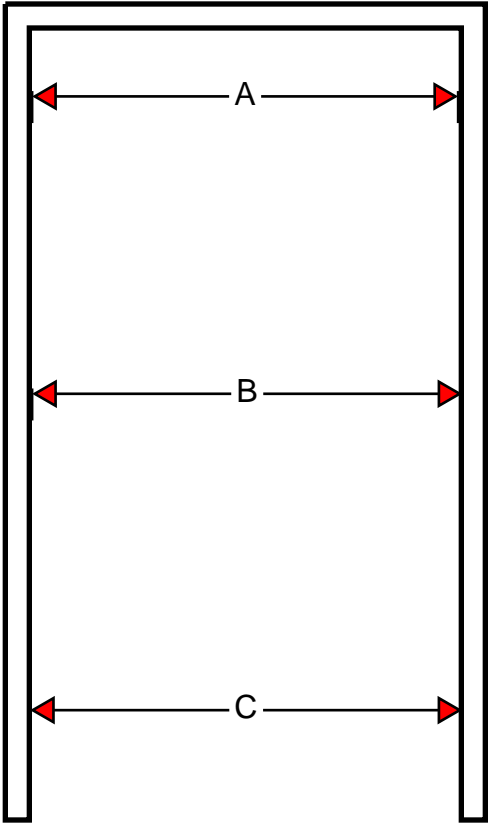
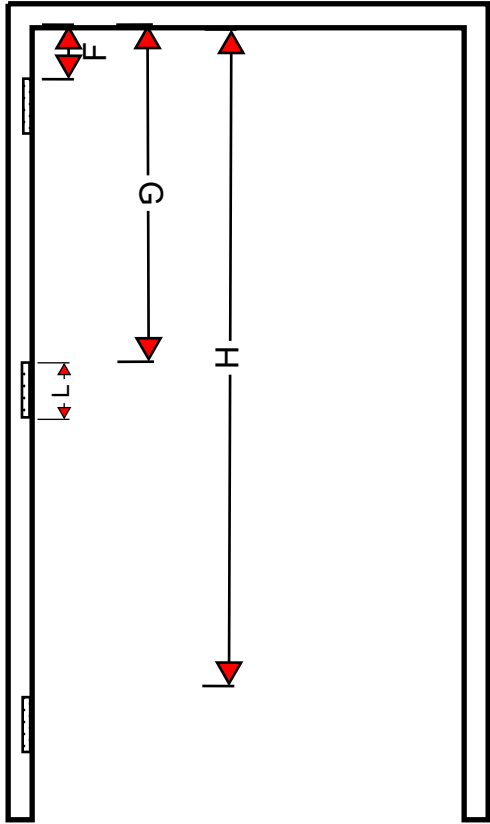
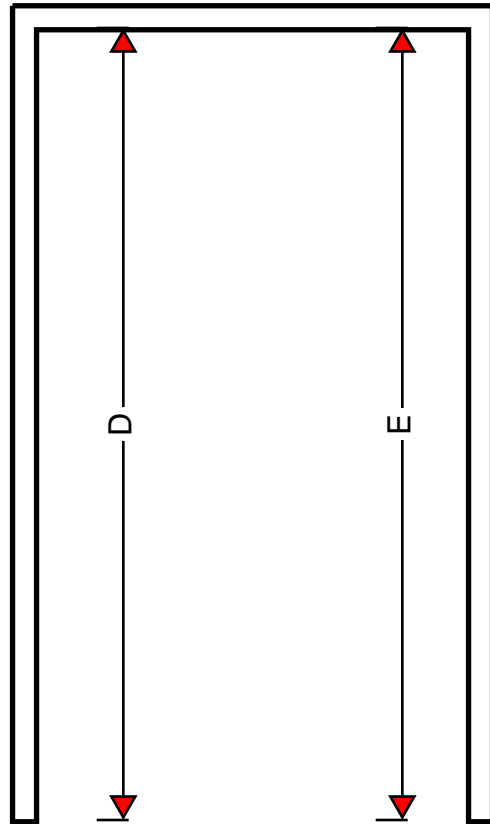


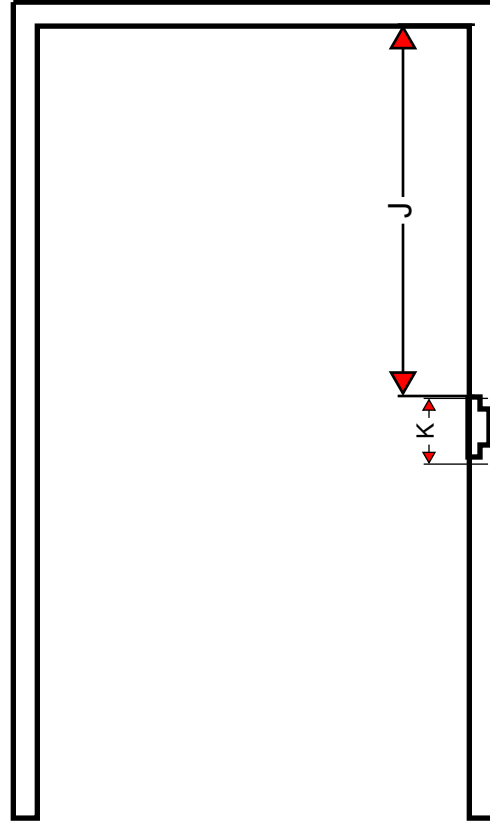
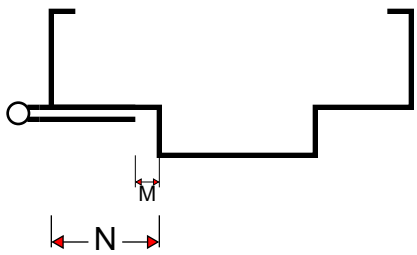
# Door & Frame Replacement Order Form



1. Frame Width (A) \_\_\_\_\_
2. Frame Width (B) \_\_\_\_\_
3. Frame Width (C) \_\_\_\_\_
4. Top of Frame to Floor (D) \_\_\_\_\_  
(or to top of threshold)
5. Top of Frame to Floor (E) \_\_\_\_\_  
(or to top of threshold)
6. Top of Frame to Top of 1st Hinge (F) \_\_\_\_\_
7. Top of Frame to Top of 2nd Hinge (G) \_\_\_\_\_
8. Top of Frame to Top of 3rd Hinge (H) \_\_\_\_\_
9. Top of Frame to top of Strike (J) \_\_\_\_\_
10. Strike Plate Height (K) \_\_\_\_\_
11. Hinge Height (L) \_\_\_\_\_
11. Lock Type: Cylindrical/Mortise/Exit \_\_\_\_\_
12. Backset of Lock \_\_\_\_\_
13. Door Closer: Y/N \_\_\_\_\_
14. Door Material \_\_\_\_\_
15. Door Thickness \_\_\_\_\_



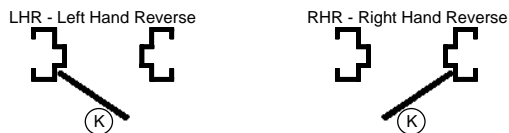
16. Visible Lite Kit Size (see reverse) \_\_\_\_\_
17. Hand \_\_\_\_\_ (see chart below)
18. Threshold Height \_\_\_\_\_
19. Hinge Thickness \_\_\_\_\_
20. Hinge Backset (M) \_\_\_\_\_
21. Frame Rabbet Size (N) \_\_\_\_\_



### DOOR HANDING CHART



(K) = KEY SIDE



# Door & Frame Replacement Order Form



1. Visible Glass Width (A) \_\_\_\_\_
2. Visible Glass Height (B) \_\_\_\_\_
3. Top of Door to top of Visible Glass (C) \_\_\_\_\_
4. Edge of Door to edge of Visible Glass (D) \_\_\_\_\_

## Standard Lite Sizes:

A	x	B
3"		33"
4"		24"
5"		32"
6"		30"
6"		36"
10"		10"
22"		30"
24"		60"

